

Man GLG Strategic Bond C Professional Acc

What is the Fund's objective?

Man GLG Strategic Bond Fund is an actively managed global fixed income fund that aims to provide an attractive total return for investors through income and capital growth potential.

Cumulative Performance




| | 3m | 6m | 1yr | 3yrs | 5yrs |
|---|---------|---------|---------|---------|---------|
| Man GLG Strategic Bond C Professional Acc | +0.2 | +0.6 | +6.9 | -2.3 | -2.3 |
| IA Sterling Strategic Bond | +3.0 | +4.4 | +11.1 | -1.0 | +8.5 |
| Rank within sector | 88 / 90 | 88 / 89 | 84 / 88 | 54 / 80 | 63 / 70 |
| Quartile | 4 | 4 | 4 | 3 | 4 |

Fund Information

| | |
|--------------|--------------------------------|
| Sector | IA Sterling Strategic Bond |
| Asset Class | Fixed Interest |
| Launch Date | 08-Nov-2011 |
| Fund Size | £8.1m / \$10.7m (16-Aug-2024) |
| Fund Manager | Craig Veysey Francois Kotze |

How does FE fundinfo rate this fund?

| | |
|--------------------------|---|
| FE fundinfo Crown Rating |  |
| Risk Score | 45 |

Investment Details

| | |
|-------------------------------|--|
| Initial Charge | 0.00% |
| Annual Charges | 0.50% |
| Note to charges | Initial Charges: max.; |
| Minimum Initial Investment | £ 500,000 |
| Minimum Additional Investment | £ 1,000 |
| Dividend Policy | Mar 31, Jun 30, Sep 30, Dec 31 (Final) |

Prices

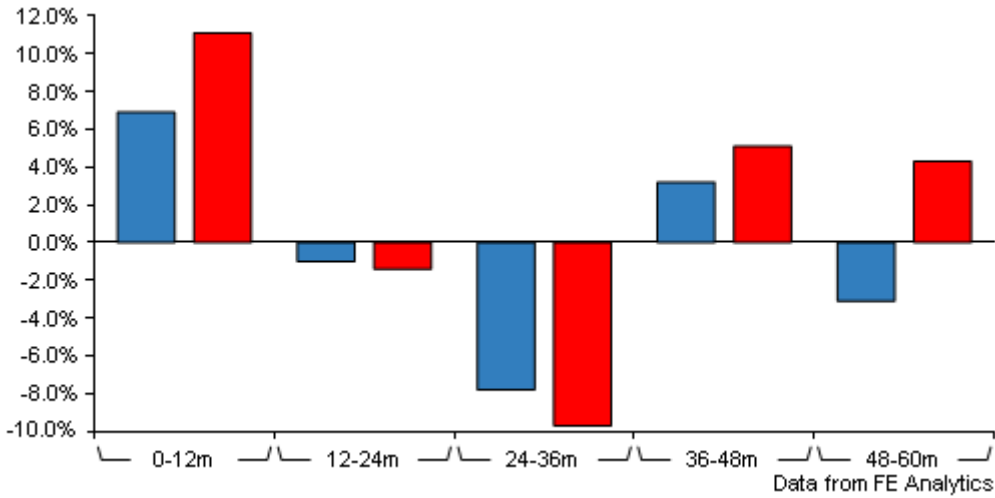
| | |
|------------|-------------|
| Unit Type | ACC |
| Mid | 142.40(GBX) |
| Price Date | 23 Aug 2024 |
| Yield | 3.15 |

Codes

| | |
|----------|--------------|
| Citicode | 0K5S |
| SEDOL | B581V62 |
| ISIN | GB00B581V620 |

Man GLG Strategic Bond C Professional

Acc

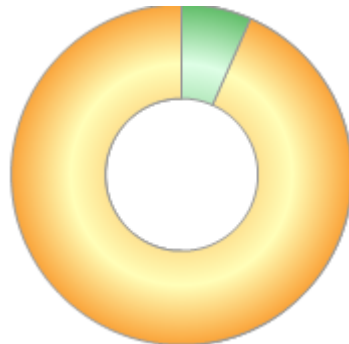


| | 0-12m | 12m-24m | 24m-36m | 36m-48m | 48m-60m |
|---|---------|---------|---------|---------|---------|
| Man GLG Strategic Bond C Professional Acc | +6.9 | -1.0 | -7.8 | +3.2 | -3.1 |
| IA Sterling Strategic Bond | +11.1 | -1.4 | -9.7 | +5.1 | +4.3 |
| Rank within sector | 84 / 88 | 46 / 86 | 32 / 80 | 57 / 75 | 67 / 70 |
| Quartile | 4 | 3 | 2 | 4 | 4 |

All prices in Pence Sterling (GBX) unless otherwise specified. Price total return performance figures are calculated on a bid price to bid price basis (mid to mid for OEICs) with net income (dividends) reinvested. Performance figures are shown in Pound Sterling (GBP).

Asset Allocation (28 Jun 2024)

| Rank | Asset Classes | % |
|------|------------------------|-------|
| 1 | Developed Government | 84.78 |
| 2 | Single Name Corporates | 6.03 |
| | | |
| | | |
| | | |
| | | |
| | | |
| | | |



Powered by data from FE fundinfo

Contact Details

Address GLG Partners LP,
Riverbank House, 2
Swan Lane, London,
United Kingdom,
United Kingdom,
EC4R 3AD

Telephone numbers +44 (0) 20 7016 7000
(Main Number)

Website www.glgpartners.com

Email info@glgpartners.com